



# Wenatchee Central Lions Talebearer

Chartered 1930  
District 19D  
Zone 2

Editor: Marcia Maloney  
Publisher: Shelley Costello

FOR THE WEEK OF FEBRUARY 4, 2011

## Announcements

No Meeting Friday February 4, 2011 due to Top Ten Dinner.

If interested in serving an office please contact immediate PP Linda Herald. Elections are March 1, 2011.

A visitation to Leavenworth Lions on February 24, 2011 the fourth Thursday in February is planned. Contact Joni Hunter or Chuck Largent if interested in joining.

International Convention has extended the \$100 volunteer fee to April 1, 2011.

## This Week's Location:

*Wenatchee Convention Center*

### Program:

**NO MEETING  
TOP 10 DINNER  
FEBRUARY 4, 2011**



 **Valley Tractor**  
*and Rentals*

**Kubota.**

**"We *SELL* and *RENT*  
Reliable Equipment  
That's Ready To go To  
Work When You Are".**

East Wenatchee • 509-886-1566

Need ideas for our New Service Project. Please turn in any of your ideas to Gwen Sparks at [gsparks@watrust.com](mailto:gsparks@watrust.com).

Deadline for ideas is Feb. 4, 2011.

Mary is looking for some 12 inch round cookie tins for the Top 10 Dinner. They are needed for the centerpieces is anyone has some that can be used please let Mary know. Thanks

# ~Committee meetings~

## All Star Basketball

Meeting Wednesday Feb. 3, 2011  
5:00pm at Phil Blakney's Office  
175 E Penny Road, Wenatchee

## Apple Blossom Pageant Work Crews

February 4<sup>th</sup> at 3pm, need 2 people  
Sunday February 6<sup>th</sup> 8 of 9am  
February 12<sup>th</sup> 9:30pm after pageant.  
February 13<sup>th</sup> morning

## Top 10 Dinner Committee

All Wednesdays between now and the  
dinner on February 4, 2011



**BOY SCOUTS OF AMERICA**



**Barbara Dower**  
Office / Trading Post Manager  
Wenatchee Service Center

Grand Columbia Council, Boy Scouts of America  
213 N. Chelan  
Wenatchee, Wa. 98801  
www.grandcolumbiabsa.org  
509-662-5501 Office

1-877-662-5501 Toll Free  
bdower@bsmail.org

**Committees!** Let the club know when  
your committee is meeting or what events  
are coming up. Contact Marcia Maloney  
before noon on Monday to put it in the  
newsletter.  
[marciamaloney@msn.com](mailto:marciamaloney@msn.com)

**Board meetings are held the 1<sup>st</sup> and  
3<sup>rd</sup> Monday of every month  
at noon @ The Roaster.**

**The next Board meeting will be  
Monday, Feb. 7<sup>th</sup>**

**All members are welcome to attend**

[www.wenatcheecentrallions.org](http://www.wenatcheecentrallions.org)

\*\*\*\*\*



Wenatchee Central Lions Club  
P.O. Box 135  
Wenatchee, WA 98807

*Serving Wenatchee Since 1932*

\*\*\*\*\*

## Board of Directors 2010-2011

President: Don Senn

Past President: Linda Herald

President-Elect: Andy Kottkamp

Secretary: Barbara Dower

Treasurer: Patti Sparks

Vice Presidents: Margene Barr, Mike Hammer,  
Eric Strode

Tail Twisters: Steve Vradenberg, Jeremy  
Anders

Lion Tamer: Joan Hunter

Membership: Peggi Moxley

Board Members: Ralph Dewitt, Craig Field,  
Jay Bean, Ernie Richardson, Mike Teaney,  
Mary Jane Gurnard, Al Hunter, & Gwen Sparks

\*\*\*\*\*

## Newsletter Submissions:

*Deadline NOON on MONDAY!*

Marcia Maloney Editor, 670-1802

[marciamaloney@msn.com](mailto:marciamaloney@msn.com)

Shelley Costello Publisher, 293-1822

[shelan143@msn.com](mailto:shelan143@msn.com)



1660 North Wenatchee Ave.  
www.jetproautowash.com • 662-WASH

Complete Surface Protectant

**rainx**

PERFORMING ARTS CENTER OF  
WENATCHEE  
JESSICA KINSEY EXECUTIVE  
DIRECTOR



Jessica has been the executive director for the Performing Arts Center for the past 5 months. She is new to the area but very excited about the center.

The Performing Arts Center was the idea of a small group of thespians proposing to build a multi-million-dollar center in Wenatchee which everyone thought was preposterous and ridiculous but it happened. It is now a 550-seat theatre free of debt, with another 160-seat theater built primarily with volunteer labor that is the home of Music Theater of Wenatchee.

This took 11 years to accomplish and 7.5 million with the first performance being Annie, the first of a series of

Apple Blossom musicals that have been a mainstay of the center. Another of the main draws is the Festival of Trees which is the primary source of support for the operation. This year Festival of Trees raised \$80,000 and was a huge success.

The Performing Arts Center has many donors and a lot of volunteers that helped to accomplish the center that it has become. In 2007-2008 the center received another substantial donation that made possible the installation of a new acoustical shell plus the addition of new mezzanine office space in the storage room. Also, at this time improvements went to the box office as well as staffing additions.

The Performing Arts Center does 90 shows a year. Some of the shows come from the Children Series, Rhythm Series, and the Entertainment Series. Some of the most know events are the Battle of Bands, Festival of Trees, and the Summer Stage. The PAC provides entertainment for all from symphonies to musicals and ballet performances.

They have a lot on the schedule for this year as well. One that all might want to mark your calendars for is the National Tour of the Music Man coming in March.

There are some ways to provide support to the PAC by volunteering,

mobile giving through your cell phone and a new one that is the elite PAC where you sell out the house in groups.

Ways to find more information about the PAC is by email [www.pacwen.org](http://www.pacwen.org) or phone is 509-663-ARTS.

The Wenatchee Central Lions wants to thank Jessica for all the wonderful information that you provided for our club.



The Floor Factory is...  
**FlooringAmerica**  
 With you every step of the way.

Ask us about our Special Financing

**Residential & Commercial Flooring**

- Ceramic Tile
- Carpet
- Pre-Finished Wood
- Laminate Flooring
- Vinyl
- In-stock Carpet
- Window Coverings
- Area Rugs
- In-stock Vinyl
- Design Consultants
- Professional Installers

13 S Wenatchee Ave. (509) 662-1421 [www.thefloorfactory.com](http://www.thefloorfactory.com)

Club Welfare.....Lori Reed,  
 Chairperson  
 670-4012  
[lorir@mitchellreedinsurance.com](mailto:lorir@mitchellreedinsurance.com)

*MD-19D Spring Conference will be in Moses Lake in April. More information will be available at the next meeting.*

**What Makes Colonial Vista Retirement and Assisted Living so Extraordinary?**

It's our staff; with over 226 years of experience!



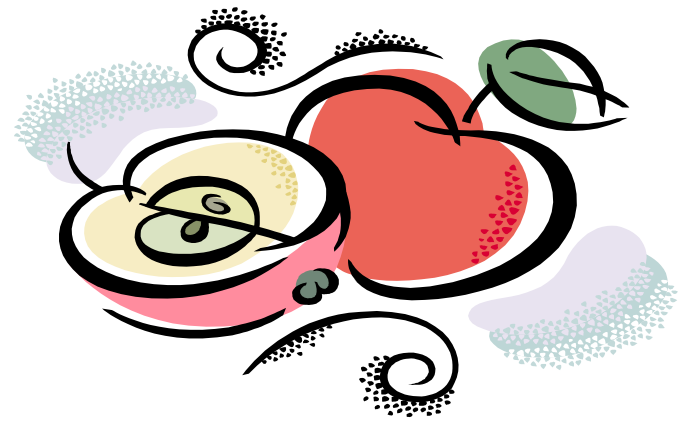
Colonial Vista Retirement is locally owned and proud of their staff for giving outstanding care and service. Stop in today and see for yourself why we were voted #1 Assisted Living in the Wenatchee Valley by the readers of the WBJ.

**Tours available daily!**



601 Okanogan Avenue, Wenatchee • 509-663-3337  
 Colonial Vista Retirement and Assisted Living Apartments IN WENATCHEE

- **Announcements**
- **19-D Leadership 101**
- **Saturday February 26, 2011**
  - **Kamloops, B.C.**
- **\$35 entry fee includes lunch**
- **Contact Joan Hunter for additional information.**



### **Top 10 Dinner Reservations**

Top 10 Dinner is Friday, February 4, 2011 at the Convention Center. The Top 10 Dinner is for the Top Ten Candidates of the Apple Blossom Festival and their Families and Lions.

Tickets can be purchased at all meetings between now and January 28, 2011. When making your reservation, please let us know if you want the vegetarian dinner.

### **Top 10 Dinner Table Hosts**

We need at least 10 Table Hosts for the Top 10 Dinner. Table Hosts will contact parents of the Top 10 candidates during the week before February 4, 2011 and will sit with the parents during the dinner. Please sign up at a Friday meeting to be a Table Host or call Peggi Moxley at 662-2031 or contact her at [PeggiMoxley@gmail.com](mailto:PeggiMoxley@gmail.com)



\*\*\*\*\*



*Wenatchee Central Lions Club  
P.O. Box 135  
Wenatchee, WA 98807*

*Serving Wenatchee Since 1932*

\*\*\*\*\*